

Detailed Play PRO  
WS Series Water Slides  
www.detailedplaypro.com  
877-548-3100

## WATER SLIDE INFORMATION SHEET

WS water slides are made from rotationally molded linear low-density polyethylene (LDPE) with a 3/8" minimum wall thickness. UV stabilizers as well as anti-static inhibitors are molded into the product.

The pipe used for the framework is 80-gauge 1.90" OD anodized aluminum structural tubing.

The pipe fittings are cast from aluminum alloy 535 and are secured to the pipes with set screws.

All climbing towers are enclosed by a DuraMesh barrier, which is a vinyl-dipped metal mesh. It is easy to see through, and resistant to vandalism and corrosion.

For additional protection, all aluminum pipe is covered in NOMATEC Tuff Pad, which is a co-extruded round foam with a reinforced outer skin for extra durability.

All hardware and concrete anchors are made from marine-grade stainless steel.

The water slides must be installed on a concrete deck around the pool.

WS water slides require a 4' wide by 12' long splash zone and a minimum depth of 3-1/2' (4' is preferred) where the flumes enter the pool. Water slides require only 15-20 gallons of water per minute for proper operation.

The customer is responsible for running water to the slide. The water line should be capped with a standard hose bib. Factory installers will run the water from the hose bib to the slide flumes. Each flume needs its own hose.

If there is no water line available, a pump can be provided to pull water directly from the pool. Pump will be mounted underneath the structure of the slide and run plumbing to and from the pump. Either ¾" or 1" PVC pipe will be used, depending on the size of the slide. The customer is responsible for contacting an electrician for all electrical connections and supplies related to the pump.

WS unit price includes a heavy duty water hose for the connection to the hose bib to the slide flume. The hose runs up the framework and is held in place with zip ties. A small hole is drilled in the side of the top elbow of the slide flume and a brass 90 degree fitting is inserted into the hole and locked down. The hose is connected to the fitting using hose clamp.

Silicone needs to be applied to the bottom half of each plastic tube component connection joint for each slide flume at the time of installation and again at approximate 2-year intervals. One tube of silicone is supplied for customer to maintain connection joints.

**Q) What will I need to do to reinforce my pool deck?**

A) Nothing. If your pool deck is a typical 4" minimum thickness concrete deck, our slides will easily mount on the deck surface.

**Q) How much water is needed on the slide?**

A) 20-30 Gallons per Minute per flume is all that is needed.

**Q) How does the water get to the top of the slide?**

A) Usually, a line can be run from the existing pool pump to the location of the slide. Our installers would then, connect to the top of the slide.

**Q) How deep should the pool be?**

A) Federal regulations call for a minimum water depth of 40". We recommend 4 Feet.

**Q) Do I need any permits or licenses?**

A) Regulations may vary by state, county and municipality. It is the pool owner's responsibility to understand and secure any permits or licenses. Occasionally, a regulator will ask for additional engineering documentation - wind, soil, structural analysis, etc. We can provide at an additional fee.

**Q) What is the warranty?**

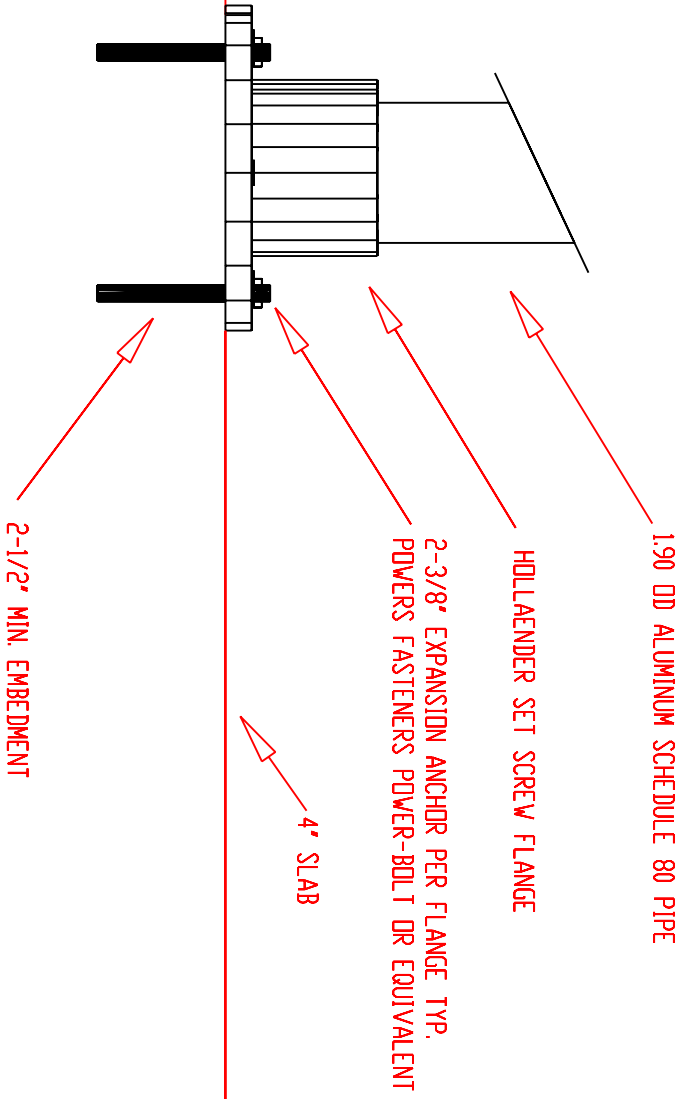
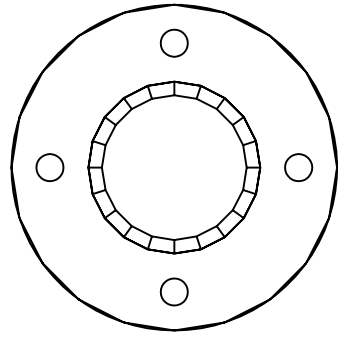
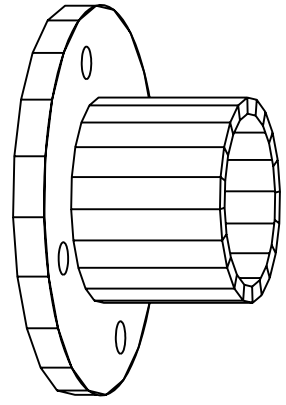
A) One year warranty covers all workmanship and materials.

**Q) Can adults use these slides?**

A) Our large 30" diameter slides can accommodate all but the very largest adults. Why should the kids have all the fun?

**Q) What are they made of?**

A) The flumes are made of smooth hygienic polyethylene plastic with 3/8" minimum wall thickness. UV stabilizer is added to prevent fading. The structure is built with 1.9" O.D. Schedule 80 aluminum structural pipe connected with aluminum-magnesium fittings. The climb is completely contained with dura-net barrier netting to prevent climbing up the outside or falling out of the inside of the structure.



FLANGE MOUNT AT TOWER BASE

-NO SCALE



**Pump, Pool, 1 HP**

Swimming Pool Pump, Self Priming, 1 HP, 1 Phase, 115/230 Voltage, 13.2/6.6 Amps, Inlet/Outlet NPTF 1 1/2 In., Motor Type Capacitor Start, ODP Motor Enclosure, 56J NEMA/IEC Frame, GPM of Water @ 10 Ft. of Head 81, @ 70 Ft. of Head 2, Max. Head 71 Ft., Suction Lift 20 Ft., Max. Liquid Temp. 160 F, 3450 RPM, Length 19 3/4 In., Width 6 1/2 In., Height 10 1/4 In., Cast Iron, Cast Iron Impeller

Grainger Item #	1P858
Price (ea.)	<b>\$439.75</b>
Brand	DAYTON
Mfr. Model #	1P858
Ship Qty.	1
Sell Qty. (Will-Call)	1
Ship Weight (lbs.)	59.5
Usually Ships	Today
Catalog Page No.	3555

Price shown may not reflect your price. Log in or register.

**Additional Info**

**Commercial Swimming Pool and Spa Pumps**

Pull-from-rear design allows motor to be quickly removed to service the impeller, seal, or motor without disturbing plumbing.

- Self-priming
- Motor enclosure: ODP
- 3450 RPM
- Automatic reset thermal overload protection




**Cast-Iron**

- Semiopen bronze impellers (Nos. 1P856 to 1P858 have cast-iron impellers)
- Continuous duty


**Tech Specs**

**Item:** Swimming Pool Pump  
**Type:** Self Priming  
**HP:** 1  
**Phase:** 1  
**Voltage:** 115/230  
**Amps:** 13.2/6.6  
**Inlet/Outlet NPTF (In.):** 1 1/2  
**Motor Type:** Capacitor Start  
**Motor Enclosure:** ODP  
**NEMA/IEC Frame:** 56J  
**GPM of Water @ 10 Ft. of Head:** 81  
**GPM of Water @ 20 Ft. of Head:** 74  
**GPM of Water @ 30 Ft. of Head:** 66  
**GPM of Water @ 40 Ft. of Head:** 57  
**GPM of Water @ 50 Ft. of Head:** 47  
**GPM of Water @ 60 Ft. of Head:** 32  
**GPM of Water @ 70 Ft. of Head:** 2  
**Max. Head (Ft.):** 71  
**Suction Lift (Ft.):** 20  
**Max. Liquid Temp. (F):** 160  
**RPM:** 3450  
**Length (In.):** 19 3/4  
**Width (In.):** 6 1/2  
**Height (In.):** 10 1/4  
**Material:** Cast Iron

**Optional Accessories**

- Gate Valve, 1.5 In NPT**  
  
**Item #:** 5E459  
**Brand:** NIBCO  
**Usually Ships:** While Stock Lasts  
**Price (ea):** \$40.42
- 
- Nipple, 1 1/2 x 2 In, Galvanized Steel**  
  
**Item #:** 6P854  
**Brand:** APPROVED VENDOR  
**Usually Ships:** Today  
**Price (ea):** \$2.18
- 
- Seal Assembly, Buna N**  
  
**Item #:** 2UV47  
**Brand:** DAYTON  
**Usually Ships:** Today  
**Price (ea):** \$12.18

**Alternate Products**

-  **Pump, Pool/Spa, 1 1/2 HP**

Detailed Play PRO  
 WS Series Water Slides  
[www.detailedplaypro.com](http://www.detailedplaypro.com)  
 1-877-548-3100